



# NATIONAL LIGHTHOUSE MUSEUM NEWS



200 The Promenade at Lighthouse Point  
Staten Island, NY 10301  
718-390-0040

## MUSEUM ADMISSION

Adults: \$7.00  
Seniors and Military: \$5.00  
Students: \$4.00  
Children Under 12: Free  
Members: Free

## HOURS

Wednesday-Sunday  
11:00 AM - 4:00 PM  
Closed Major Holidays

*Call to Arrange Group/Class Tours.*

[www.lighthousemuseum.org](http://www.lighthousemuseum.org)

 [www.FB.com/NationalLighthouseMuseum](https://www.facebook.com/NationalLighthouseMuseum)

 [@nationallighthousemuseum](https://www.instagram.com/nationallighthousemuseum)  [@NLMSINY](https://twitter.com/NLMSINY)

## Lighthouses of Great Britain: A Rare Exhibit of Antique Prints

The National Lighthouse Museum is exhibiting a selection of antique prints of lighthouses from Great Britain, past and present. It opened on Thursday, January 13th and is on display through Sunday, March 13th, 2022, curated by Danielle Mann.

Lighthouses of Great Britain is inspired by the visit of Her Royal Highness The Princess Royal who is the Honorary Chair of the National Lighthouse Museum's *Campaign For Illuminating Future Generations*. The selected works of art are part of a collection of 300 pieces donated by Dr. Loren Graham and Dr. Patricia Albjerg Graham and features lighthouses with a unique history, significant engineering importance, and sentimental value to Her Royal Highness.



The prints, which date back to the 1800s, are original wood engravings, aquatint or lithograph prints, or news clippings from that time. Several prints also feature hand painted watercolor elements that make these pieces one of a kind.

The works range from maps, engineering plans, and artistic renderings of lighthouses and their surrounding areas. Some of the lighthouses in the exhibit no longer exist or have since been altered from their original design.

Dr. Loren Graham is a professor emeritus of the history of science at MIT and Harvard University and is a prolific author. One of Dr. Graham's books is on the history of the Grand Island North Light in Michigan which he purchased over fifty years ago when it was in ruins. The lighthouse has since been restored to a pristine state.

During that process, he became interested in antique lighthouse prints and accumulated over 300 of them which he donated to the National Lighthouse Museum. Dr. Patricia Albjerg Graham was the First Woman Dean at Harvard Graduate School of Education and is the Charles Warren Research Professor of the History of American Education, Emerita at Harvard.

Aquatint prints are made using a copper plate which is etched into using acid. The plate is covered in an acid-resistant resin in the desired areas to create shadow and tone. After heat is applied to seal the resin onto the plate, the plate is placed into a nitric acid bath for the desired amount of time. The plate is then inked and sent through a printing press onto moist paper creating several copies from one plate. Afterward, color is added using colored plates or, as in the case of some of the antique prints on display, are hand colored with watercolor paints.



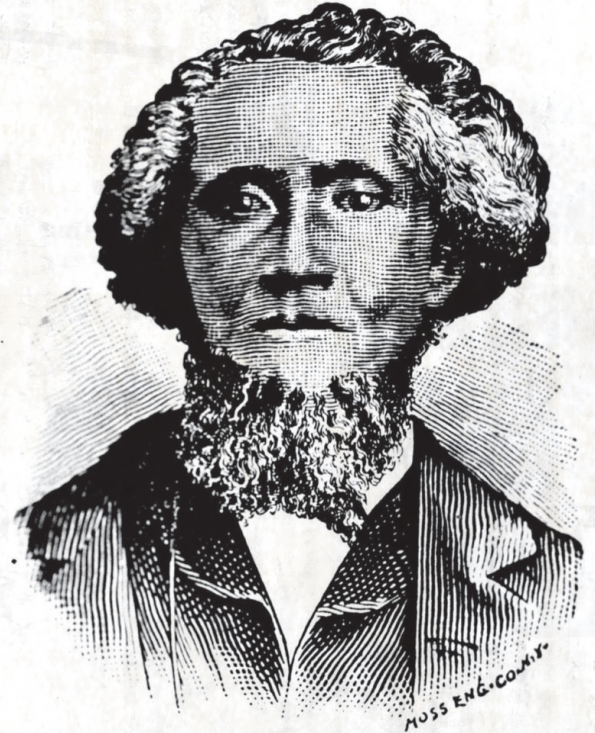
### Keeping The Light: The Story of the Bravery, Heroism and Courage of African American Lighthouse Keepers & Life Saving Service

The National Lighthouse Museum in collaboration with Staten Island Black Heritage and Roc-A-Natural presented a lecture and performance for Black History Month on Sunday, February 27th, 2022 at 2:00 PM. Award winning actress Christine Dixon, best known for her one-woman dramatic performance portraying the life of Harriet “Moses” Tubman, shared the story of the brave and heroic African American men and women who served as Lighthouse Keepers, assistants, and keepers of Life Saving Stations in the United States. Much of this earlier history has been lost and is not known by many people.

The Museum will be adding additional informative graphics to its permanent exhibit to further tell the story of important figures such as Willis Augustus Hodges, the first African American Lighthouse Keeper of Cape Henry Lighthouse, and Captain Richard Etheridge, the first African American keeper of a Life-Saving Station.

Dixon reminds us that Black History is American History and has performed “Harriet Tubman Herself” multiple times a week throughout the year at schools, churches, performing arts centers, and children’s museums since 2008. Dixon just finished her 647th show and has been invited to perform across the United States and internationally in Zimbabwe, Uganda, Nigeria, Kenya, and Timbuktu. Dixon depicts Tubman in various stages of her life starting from her childhood all the way to the Tubman’s remarkable leadership of the Underground Railroad. The event at the National Lighthouse Museum will be unique in that Dixon will be incorporating Black Maritime History into her performance. Dixon was featured in Megan Thee Stallion’s 2021 Nike Commercial, which has received 7.3 million views.

Willis Augustus Hodges served as the first African American Lighthouse Keeper of Cape Henry Lighthouse from May 10 to July 26, 1870. Born to one of the most political families in Princess Anne County, Virginia, Hodges advocated for abolition, voting rights, property rights, and the integration of schools. In 1848, Hodges started a town in New York called Blacksville where he used his home as a stop for the Underground Railroad. Captain Richard Etheridge and his crew of African American surfmen was the first all-black crew in the U.S., working at the Pea Island Life-Saving Station in North Carolina. A statue of Etheridge stands in Manteo, North Carolina in honor of his brilliant career. On March 5th, 1996, Etheridge and his team of surfmen were awarded gold medals posthumously in Washington, D.C. for the rescue of all nine passengers and crew of the E.S. Newman on October 11, 1896.





### Living Breakwaters Project: Presentation and Discussion

**P**aul Alter, Principal Architect with SKOLNICK Architecture + Design Partnership, in collaboration with the National Lighthouse Museum, will be moderating a presentation and panel discussion on the Living Breakwaters Project on Sunday, April 3rd, 2022 at 2pm. The Living Breakwaters Project is currently being constructed on the southern coast of Staten Island. Joining Alter on the panel discussion will be Senior Designer, Tami Banh of SCAPE Landscape Architecture and Senior Coastal Resident Engineer, Matthew Clark, in charge of the construction of the Living Breakwaters. Discussion will focus on the project design and challenges of implementation. This event will include visual and narrative presentations and a Q&A to follow.

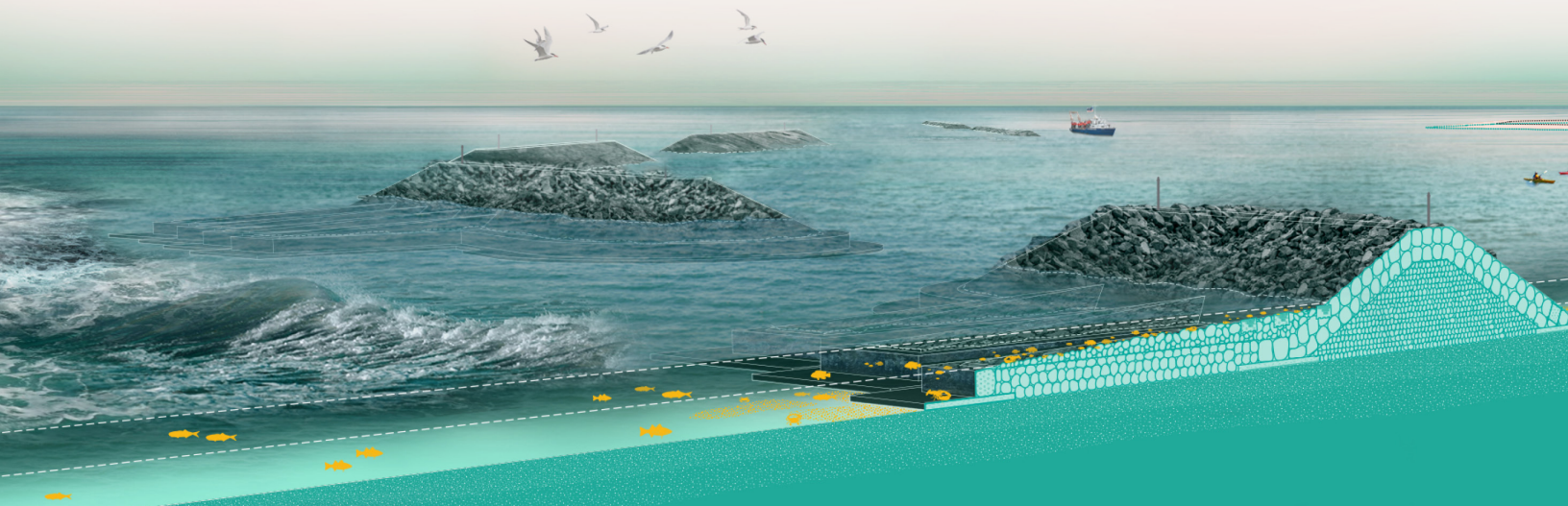
Living Breakwaters is an innovative coastal green infrastructure project consisting of 2,400 linear feet of near-shore breakwaters—partially submerged structures built of stone and ecologically-enhanced concrete. The breakwaters are designed to reduce the impact of climate-intensified weather events on the low-lying coastal community of Tottenville, which experienced some of the most damaging waves in the region and tragic loss of life during Superstorm Sandy in 2012. Informed by extensive hydrodynamic modeling, the breakwaters are also designed to slow and, eventually, reverse decades of beach erosion along the Tottenville shoreline.

The breakwaters will also be constructed with “reef ridges” and “reef streets” that provide diverse habitat space, with live oyster installation expected to follow construction completion in 2024. Living Breakwaters was initially developed by SCAPE Landscape Architecture for the Rebuild by Design (RBD) Competition, a design competition held by the U.S. Department of Housing and Urban Development (HUD) to seek cutting edge ideas for coastal resilience in the wake of Hurricane Sandy. The project is being implemented by the Governor’s Office of Storm Recovery.

Paul Alter, RA, AIA, is the Principal Architect with SKOLNICK Architecture + Design Partnership, the firm responsible for the National Lighthouse Museum’s building design. He is a sailor and captain of the 47’ sloop “Signorina” out of Sag Harbor, NY. Alter is a lighthouse enthusiast, environmentalist, and a passionate appreciator of islands, the ocean, and global sustainability. Tami Banh is a Senior Designer at SCAPE and the Deputy Project Manager for the Living Breakwater design team. Tami holds a dual Master’s in Architecture and Landscape Architecture with Distinction from Harvard University. Her works and research focus on ecology, displacement, climate resilience, critical cartography, and human-nonhuman cohabitation. Tami is an Associate Adjunct Professor in the Urban Design program at Columbia University.

Matthew Clark, PE, CENG, PMP is a Coastal Engineer with Baird and is the Resident Engineer for construction of the Living Breakwaters Project. He has more than 30 years of experience in planning, design, and construction of waterfront infrastructure. Clark has been involved with breakwaters, reefs, revetments, offshore islands, waterfront parks, and beach restoration with sites extended throughout North America and internationally. Clark is a registered professional engineer in 14 states.

*Living Breakwaters Project: Presentation and Discussion will take place on Sunday, April 3rd, at the National Lighthouse Museum. The event will start at 2:00 PM. Tickets are \$10, \$5 for museum members, and can be purchased at [www.lighthousemuseum.org/events](http://www.lighthousemuseum.org/events). Tickets can also be purchased at the door. The National Lighthouse Museum is open from Wednesday to Sunday, 11:00 AM to 4:00 PM, and is located at 200 The Promenade at Lighthouse Point, Staten Island, NY 10301. You can contact the museum by email at [info@lighthousemuseum.org](mailto:info@lighthousemuseum.org) or by phone: (718) 390-0040.*





# A Snapshot of our Boat Tours



## 2022 National Lighthouse Museum Boat Tour Schedule

*Tickets Purchased will include One Year FREE Membership\*  
to the National Lighthouse Museum! \*One FREE membership per family*

**Sunday, May 22, 2022 • 11am-3pm • Encircle Staten Island Boat Tour** - Expert speakers will narrate the cruise as we encircle Staten Island and explore fascinating and mysterious sites unfamiliar to most New Yorkers.

**Friday, June 3, 2022 • 11am-3pm • SIGNATURE Boat Tour** - This popular boat tour familiarizes passengers with key lighthouses that facilitate safe passage from the Atlantic Ocean into Lower New York Harbor.

**Sunday, June 26, 2022 • 11am - 3pm East River Lighthouse Tour** - Pass through Hell Gate to Long Island Sound and Execution Rocks Lighthouse learning facts about lighthouses.

**Sunday, July 17, 2022 • 4pm - 8pm • Twilight Encircle Staten Island Dinner Lighthouse Tour** - Expert speakers will narrate the cruise as we encircle Staten Island and explore fascinating and mysterious sites unfamiliar to most New Yorkers.  
*Three course dinner includes salad, chicken or fish, potato and vegetable, wine, dessert, tea or coffee.*

**Sunday, August 7, 2022 • 1-5 pm • Lighthouse Weekend Signature Lighthouse Tour** - This popular boat tour familiarizes passengers with key lighthouses that facilitate safe passage from the Atlantic Ocean into Lower New York Harbor.

**Sunday, September 11, 2022 • 3-7 pm Hudson River Dinner Cruise** - See the Little Red Lighthouse under the George Washington Bridge. *Three course dinner includes salad, chicken or fish, potato and vegetable, wine, dessert, tea or coffee.*

**Friday, October 28, 2022 • 6:30-10:30 pm • Haunted Halloween East River Dinner Cruise** - Cruise the East River through Hell Gate recalling haunted tales of lighthouses along the way and other points of spooky interest. Hear about the haunting river stories on the way to Execution Rocks. *Three course dinner includes salad, chicken or fish, potato and vegetable, wine, dessert, tea or coffee.*

**Boat Tour: \$60 for adults/ \$40 for children**

**Dinner Cruise: \$90 for adults/ \$50 for children**

**Order tickets online at [www.lighthousemuseum.org/boat-tours](http://www.lighthousemuseum.org/boat-tours)**

*Group rates available. Call the Lighthouse Museum for details.*



## NLM Notes:



"Thank you so very much for this amazing journey through the Museum. History is priceless and lighthouses are such a special part of our journey through history!" ~ Kim Long

"Thank you for the most beautiful Museum experience!"  
~ Maddie, Kansas City, Kansas

"This Museum is very cool and informative with really nice models and multi-media. This was a great spot to visit and I hope to do it again!" ~ Rose & Jerome, Maryland

"Amazing tour with the best volunteers!" ~ Crystal & Harris, Iowa

"Visited just because of random decision and seriously LOVED it! Very educational and cozy..."

"Such a lovely Museum for lighthouse friends – can't wait for the expansion!" ~ Janine

"Very informational and a great place to hear more about these institutions we call lighthouses – keep up the good work!"  
~Jenne Holmes, New Hampshire



NLM Board of Trustees 2021 Holiday Party held at Stone House on the lake at Cloves Lakes Park

Besides staying up-to-date with all of the National Lighthouse Museum news, we feature a Lighthouse of the Week!



### LIGHTHOUSE OF THE WEEK

**Piedras Blancas Lighthouse, San Simeon, CA**  
Few tall, classic lighthouse towers, typical of the Atlantic Seaboard, were built on the Pacific Coast, since the high bluffs along much of its extent provided most of the necessary height for a light.

*Learn more on our Facebook page and Sign Up for our Newsletter.*



The FRIENDS meeting celebrated Fran Gilstein's birthday on February 2nd, 2022.

### In Memoriam

Al Branchi  
Catherine Brech  
Lou DeLuca

Norman Light  
Peter Killen  
John Renninger



## UPCOMING EVENTS

### 2022 Presentations & Lectures

#### APRIL

Sunday, April 3, 2022 • 2PM

Living Breakwaters Project

#### MAY

Monday, May 9, 2022 • 8AM-5PM

American Boating Course - Safe Boating Certificate  
Staten Island Power Squadron

Sunday, May 15, 2022 • 10 AM - 4PM

The Great Lighthouse Hunt

Thursday, May 19, 2022 • 6PM

Kayaking

#### JUNE

June 20, 2022

Annual Golf Outing at Jumping Brook Country Club

Wednesday, June 15, 2022 • 6PM • 8:30PM

Partner's In Command by SI Power Squadron

### SAVE THE DATES!

Staten Island's Great Lighthouse Hunt

Sunday, May 15, 2022

FREE Waterfront Fridays Films:

Taking it to the Streets!

Starting July 8 – through September, 2022

Lighthouse Gala Weekend

August 5, 6 & 7, 2022

Fig Fest

Sunday, September 18, 2022

Lighthouse Point Fest

Sunday, October 2, 2022

# ON THE WATERFRONT

OUTDOOR EVENTS 5PM - 10:30PM

FRIDAY NIGHTS JULY 8<sup>TH</sup> - SEPT 2<sup>ND</sup>

## FREE FRIDAY NIGHT FILMS

...TAKING IT TO THE STREETS

ON THE PROMENADE OF THE NATIONAL LIGHTHOUSE MUSEUM

200 the Promenade at Lighthouse Point, Staten Island, NY 10301

# CALL FOR ARTISTS, VENDORS & SPONSORS

SAVE the  
DATE!!



\$50/night for Arts/Craft Vendors  
\$100/night for Food Vendors  
Discounted packages available  
for all 8 nights!



To reserve your spot go to:  
[lighthousemuseum.org/events](http://lighthousemuseum.org/events)  
Performers and singers email:  
[dmann@lighthousemuseum.org](mailto:dmann@lighthousemuseum.org)

**SHELDON  
LEWIS**



**EARLY BIRD SPECIAL! Name/  
Company listed on official flyer &  
marketing if booked before April**



ILLUMINATING CIRCLE



NATIONAL  
LIGHTHOUSE  
MUSEUM

*Lighting Our Way with Royalty*

THE CAMPAIGN FOR  
ILLUMINATING FUTURE GENERATIONS

**BECOME AN ILLUMINATING CIRCLE MEMBER**

Call 718-390-0040 or email [info@lighthousemuseum.org](mailto:info@lighthousemuseum.org) for more information.

Benefits:

- Launching member of the Illuminating Circle
- Donor name on Illuminating Circle displayed in museum
- Invite to Illuminating Circle special events
- Commemorative pin and remembrance gift
- Complimentary one year membership to museum

Annual museum membership:

- Free admission to the museum
- 10% discounts in the museum store
- Members' rates for events, programs, presentations, & classes
- Quarterly newsletter





Become a Member  
Get involved today!



## ANNUAL MEMBERSHIP

### ALL MEMBERS ENJOY:

*Free admission to the museum*

*10% discounts in the museum store*

*Members' rates for events, programs, presentations & classes*

- ☐ **Lamplighter: \$40** – Students/Seniors(65+)/Military
- ☐ **Keeper: \$50** – Individual
- ☐ **Family Keepers: \$75** – Family (2 Adults & 2 Children)
- ☐ **Range Light: \$100** – Affiliate/Not-For-Profit

**Name of Organization:** *Link on the NLM Website*

- ☐ **Light Ship: \$500** – Small Business  
(Under 10 Employees): *Membership Certificate, Free Employee Admission with Company ID and Link on the NLM Website*
- ☐ **Beacon: \$2500** – Corporate (24 Employees or Less):  
*Membership Certificate, Free Employee Admission with Company ID, 4 Tickets to a Lighthouse Boat Tour of Your Choice, Link on the NLM Website*
- ☐ **Fresnel Lens: \$5000** – Corporate: *Membership Certificate, Free Employee Admission with Company ID, Four Tickets to a Lighthouse Boat Tour of Your Choice, Two Tickets to the NLM Gala, full page ad in Gala Journal, Link on the NLM Website*

FULL NAME

DATE

STREET ADDRESS

CITY, STATE, ZIP

EMAIL

TELEPHONE

CREDIT CARD NUMBER

☐ VISA ☐ MASTERCARD ☐ AMEX

EXP. DATE

SECURITY CODE

SIGNATURE

☐ *I would like automatic annual membership renewal.*

Checks payable to National Lighthouse Museum. Mail to:  
200 The Promenade at Lighthouse Point, Staten Island,  
NY 10301 or sign-up on line at [www.lighthousemuseum.org](http://www.lighthousemuseum.org).